

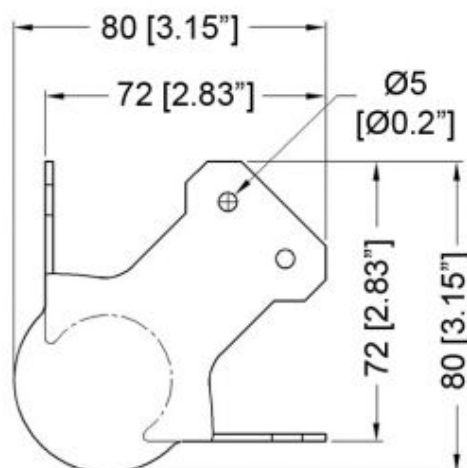
# Penn Elcom C0651 large heavy duty ball corner with 30mm offset

Part of the C0650 family of corners, the C0651 is offset making it suitable for use with 30mm extrusions.

Manufactured from 14gauge (2mm) steel

Available in a silver finish and a black finish.

A stacking version is also available (silver finish only)



## Price

Penn Elcom C0651Z large heavy duty ball corner SILVER finish (Product reference 4979-10188)	£1.63
penn Elcom C0651/01 stacking version SILVER finish (Product reference 4979-10189)	£1.68
Penn Elcom C0651K large heavy duty ball corner BLACK finish (Product reference 4979-10190)	£1.88