

Iron Right Hand Rim Lock - Small=

Iron Right Hand Rim Lock - Small 83584

Product information

Rim Lock Size: 5 1/2" x 3 3/8" (140mm x 86mm)

Spindle Centre: 3 3/4" (97mm)

Lock Centre: 1 5/8" (42mm)

Additional information

A smaller sized traditional style rim lock which has a very heavy, solid feel to it.

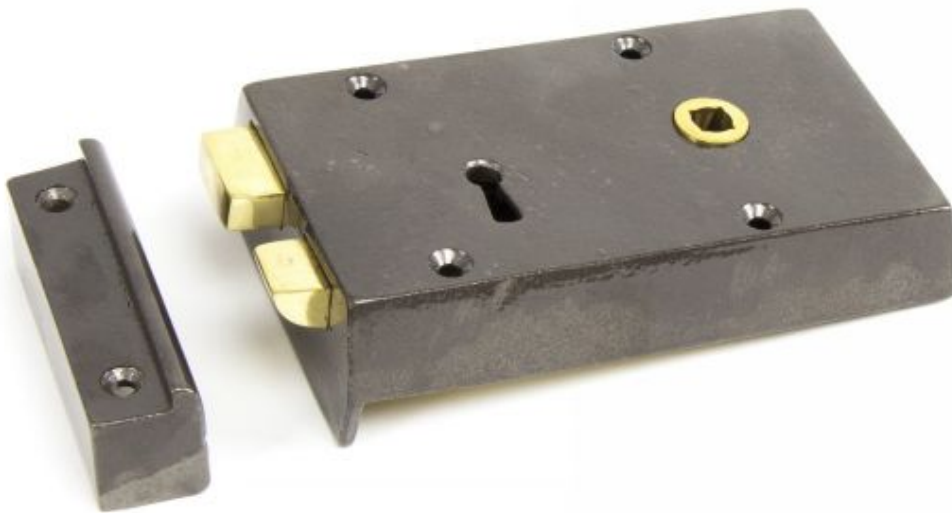
Cast from solid iron, with quality brass movements inside to produce a weighty, Victorian style lock.

Comes with two solid brass keys.

Maximum door thickness of 60mm.

Suitable for use internally or externally. Maintenance instructions must be followed to preserve the finish of your product.

Finished in Iron with a clear powder coating



Price

£60.42 (Product reference 7236-0)

A discount of 20% has been applied for the use of All Customers