

Petra Lever on a rose - Satin nickel

Frelan Jedo 'PETRA' designer sprung lever door handles on round rose

- Satin brushed nickel finish, on a zinc alloy base material, a versatile lever finish
- Features a comfortable classic straight round T bar shape lever design
- Supplied with a screw on type round rose that conceals the fixings
- Designed for a modern aesthetic appeal for internal door use
- Please note: These handles are NOT Fire Rated
- Dimensions: (view illustration - generic image)

Size A :

Lever Length

- 117mm

Size B :

Projection

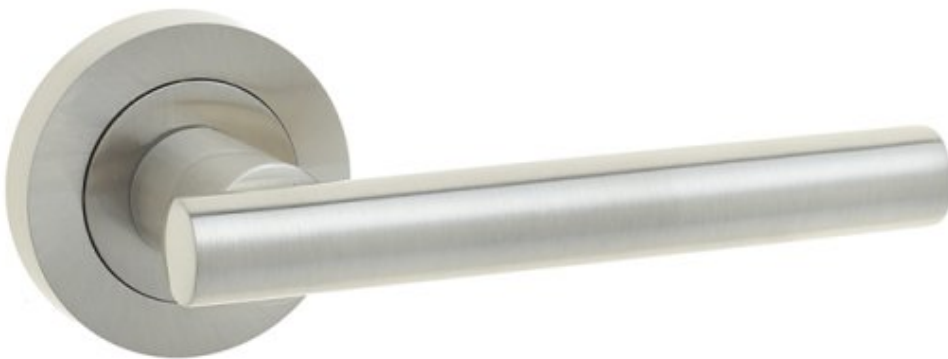
- 50mm

Size C :

Rose Diameter

- 50x10mm

- Tested requirements covered under - EN1906 for lever handles
- Supplied with both screws and bolt through fixings
- Bolt through fixings require bolt through type latches or locks
- Fixings allow these handles to be suitable for doors 35 to 54mm thick
- Allen key, grub screw and 8mm thick spindle also included



Price

£11.61 (Product reference 4595-0)

A discount of 35% has been applied for the use of All Customers